



# Haoma Mining NL

A.B.N 12 008 676 177

**Registered Office & Head Office:**

Level 1, 401 Collins Street, Melbourne, Vic., 3000, GPO Box 2282U, Melbourne, Vic., 3001.  
Telephone (03) 9629 6888, Facsimile (03) 9629 1250  
Email: [haoma@roymorgan.com](mailto:haoma@roymorgan.com) Website: [www.haoma.com.au](http://www.haoma.com.au)

December 28, 2007

Company Announcements Office  
Australian Stock Exchange  
Level 45, Rialto South Tower  
525 Collins Street  
**MELBOURNE VIC. 3000**

Dear Sir,

## **Encouraging Iron (Fe) and Manganese (Mn) Rock Chip Samples in North Pole Region (E45/2532 – pending) near Haoma’s Normay Mine**

Haoma Mining NL (ASX: HAO) is pleased to announce encouraging results from rock chip sampling within the North Pole Region of the Pilbara at its North Pole Project (100% Haoma Mining NL), located 150 km south east of Port Hedland (See Figures 1 & 2).

In late November, 2007 reconnaissance rock chip samples were taken over an extensive outcrop of andesitic pillow basalt in Tenement E45/2532. The samples have returned encouraging Iron and Manganese results with maximum values of **46.1%** Manganese, **54.8%** Iron and **1,150 ppm** Vanadium (See Table 1).

Haoma Mining NL holds 10 Mining Leases and 1 Exploration Lease (pending) within the North Pole Region of the Pilbara, covering approximately 276 km<sup>2</sup>. Tenement E45/2532, from which the samples were taken, has in the past had limited exposure to modern exploration techniques.

**Table 1: North Pole Project – November, 2007 Rock Chip Sample Results**

Sample	GDA94E	GDA94N	Fe	Mn	Al <sub>2</sub> O <sub>3</sub>	CaO	P	S	SiO <sub>2</sub>	V	LOI 1000
			%	%	%	%	%	%	%	ppm	%
R2007-05	755335	7655697	31.50	15.80	1.50	0.40	0.143	0.246	18.45	828	10.25
R2007-06	754397	7655676	54.80	0.70	0.76	0.08	0.094	0.232	9.10	1150	9.13
R2007-07	754261	7655640	8.29	0.02	4.27	0.08	0.031	0.417	80.70	64	<0.01
R2007-08	755225	7655675	8.14	46.10	1.48	0.96	0.058	0.235	8.55	334	11.45
R2007-09	755200	7655676	18.70	1.09	5.04	0.17	0.219	0.296	58.00	176	5.81
R2007-10	755647	7655749	32.00	0.11	1.76	13.60	0.129	0.239	20.10	272	17.00
R2007-11	755709	7655817	27.70	0.34	1.78	20.20	0.053	0.264	4.94	214	26.60
R2007-12	755295	7655797	44.10	2.71	1.96	0.13	0.131	0.256	19.90	224	8.88
R2007-13	755358	7656033	36.60	2.09	1.20	0.10	0.052	0.256	35.20	246	6.94
R2007-14	754923	7655868	37.30	13.10	1.51	1.63	0.103	0.234	11.85	310	10.70
R2007-15	755760	7655898	48.50	6.08	3.40	0.07	0.187	0.242	6.14	178	9.37

[Note: <sup>1</sup>]

<sup>1</sup> The above table of exploration assay results was prepared on December 27, 2007 by Ms Sandra McKenzie (B Sci., MAusIMM), who is a competent Person under the Australasian Code for Reporting of Exploration Results, Mineral Resources and Ore Reserves (JORC Code).

**Perth Office:**

Suite 22 Piccadilly Square 7 Aberdeen Street, Perth, W.A. 6000  
Tel: (08) 9325 4899 Fax: (08) 9221 1341

Haoma is encouraged by the latest positive results which appear to have defined a new area containing Iron and Manganese mineralisation within the North Pole Region of the Pilbara, and will actively pursue further fieldwork within the area during the coming work season.

Haoma will continue to keep the market informed of its progress in advancing this project.

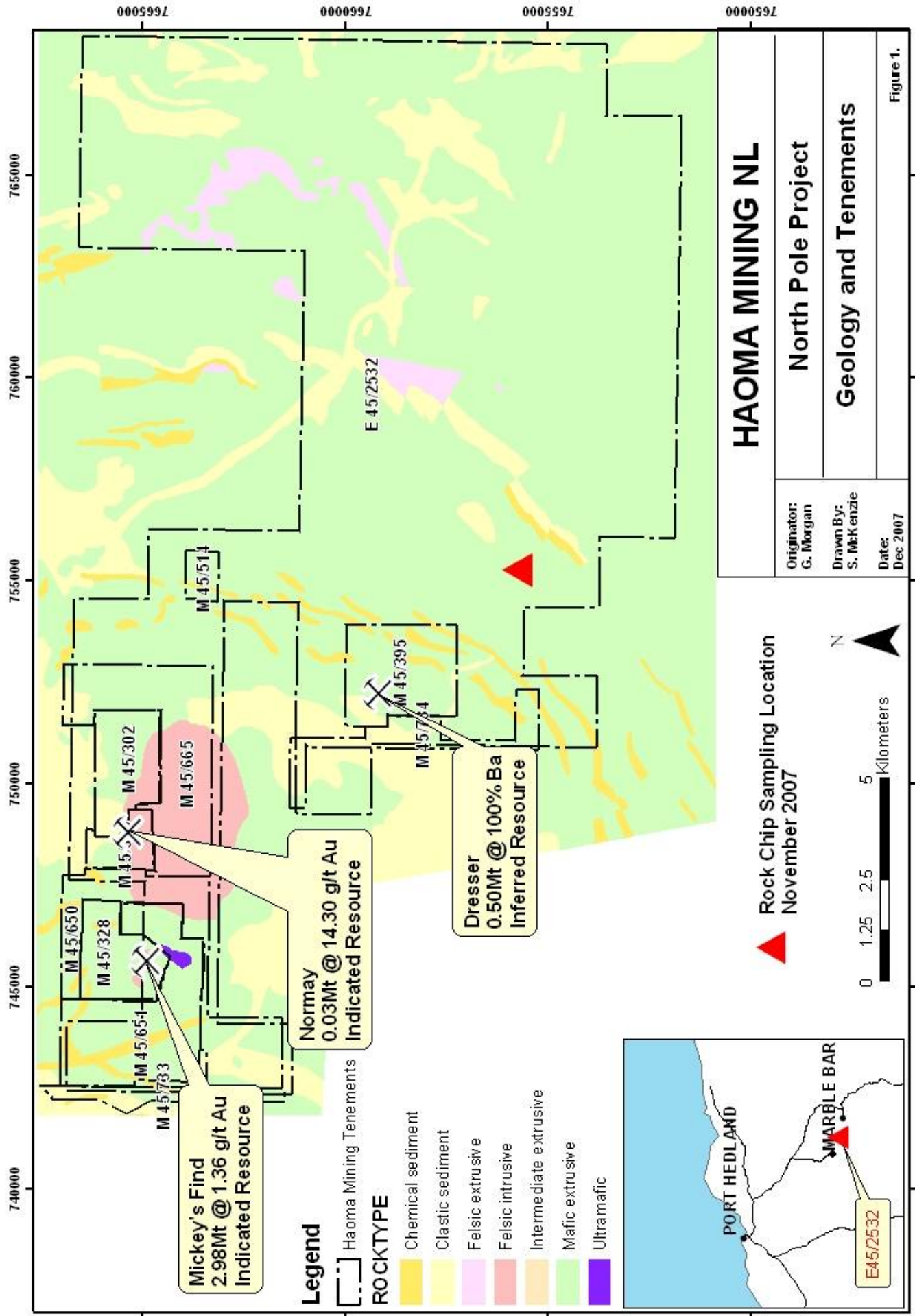
For further information, please contact:

Gary Morgan, Chairman: + 61 411 129 094, or  
Peter Cole: Acting General Manager: + 61 412 810 690

Yours sincerely,

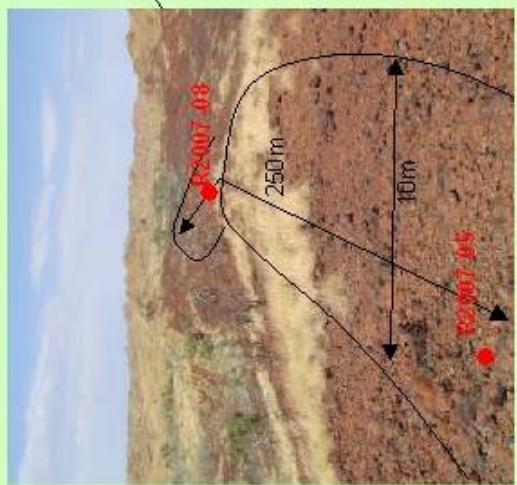
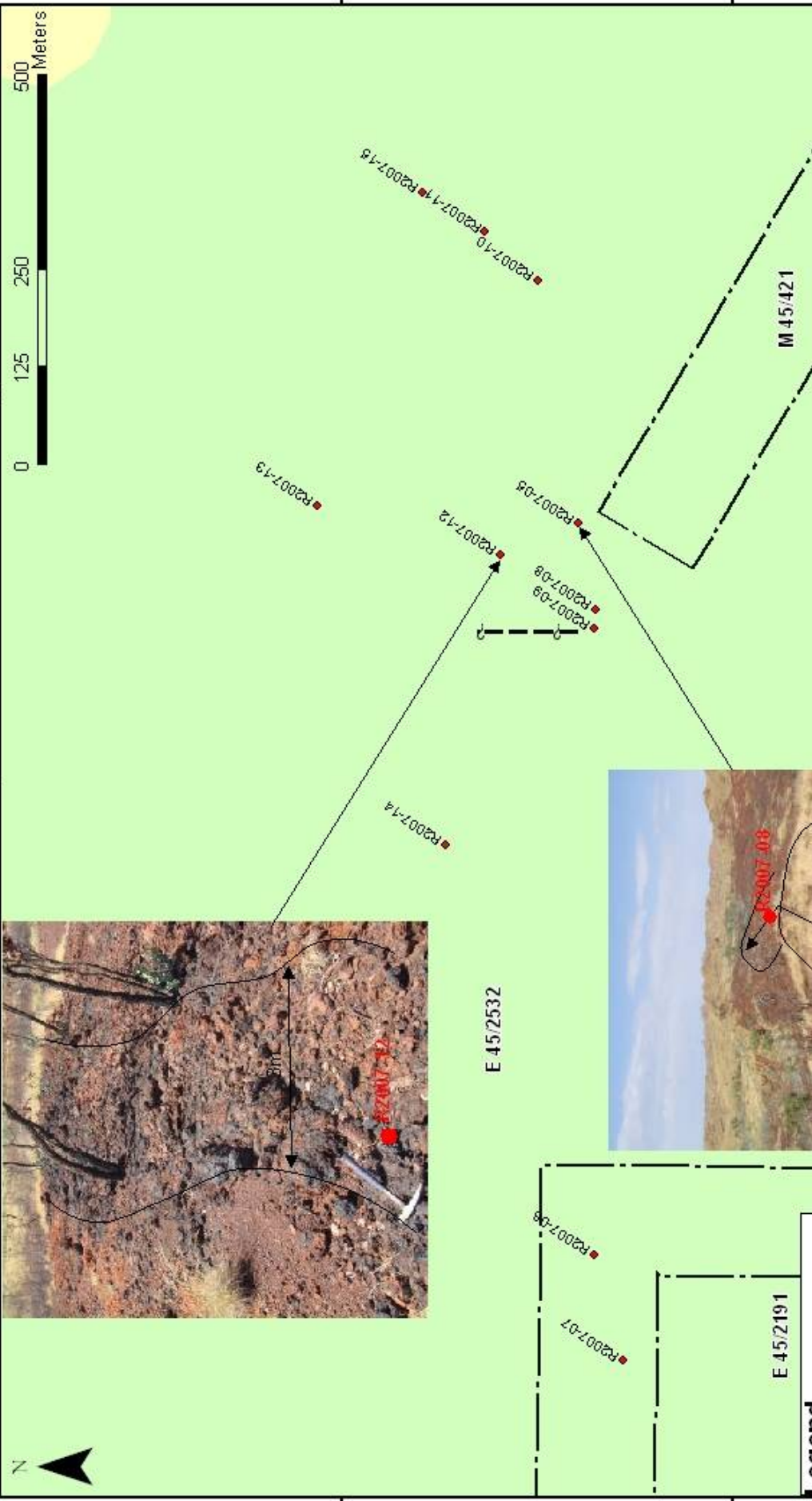
A handwritten signature in black ink, appearing to read 'Gary Morgan', with a long horizontal flourish extending to the right.

**Gary C. Morgan**  
CHAIRMAN



754500 755000 755500 756000

0009500 7655000



**Legend**

- ◆ Rock Chip Samples 2007
- ▭ Tenements

**ROCKTYPE**

- Clastic sediment
- Mafic extrusive

<b>HAOMA MINING NL</b>	
Originator: G. Morgan	<b>North Pole Project</b>
Drawn By: S. McKenzie	<b>Geology and Rock Chip Samples</b>
Date: Dec. 2007	Figure 2.