



Haoma Mining NL

A.B.N 12 008 676 177

Registered Office & Head Office:

Tonic House, 386 Flinders Lane, Melbourne, Vic., 3000, GPO Box 2282U, Melbourne, Vic., 3001.

Telephone (03) 9629 6888, Facsimile (03) 9629 1250

Email: haoma@roymorgan.com Website: www.haoma.com.au

October 5, 2017

Company Announcements Office
Australian Stock Exchange
Level 4, North Tower, Rialto
525 Collins Street,
MELBOURNE, VIC 3000

Dear Sir,

Haoma Mining's tenements at the Bamboo Creek Mine and Comet Mine, near Marble Bar, contain Pyritic Conglomerate Materials in the Hardey Sandstone Formations

Recently numerous mining companies involved in mineral exploration in the Pilbara Region of Western Australia have reported new discoveries of Conglomerate Formations hosting gold mineralisation including nuggets.

These new discoveries of gold bearing Conglomerate Materials include Witwatersrand style mineralisation at 'Comet Well' and 'Purdy's Reward' by Artemis Resources (ASX: ARV) and Novo Resources (TSX-V: NVO), and at Louden's Patch by De Grey Mining (ASX: DEG).

A resurgence in gold exploration is taking place throughout the Pilbara Region in known areas of outcropping conglomerates containing Fortescue Group rock types – a thick pile of sedimentary and volcanic rocks overlying the older Archaean basement rocks (Warrawoona Group) of the Pilbara region.

Haoma has recently received requests to release details on their tenement holdings that contain significant quantities of Conglomerate Materials.

Those Haoma areas which contain contact zones and rock types of the Lower Proterozoic Fortescue Group include Haoma's mining tenements at Bamboo Creek (Figure 1) and Marble Bar Comet Mine (Figure 2) which contain Conglomerate Materials in the Hardey Sandstone Formations. The Fortescue Group are known to overlie the ca 3300 to 3500Ma old Archaean basement unconformity which is evidently highly prospective for gold.

Similarities between Proterozoic lithologies in the Pilbara, WA, and South Africa have long been recognised, and Hardey Sandstone Conglomerates and Witwatersrand Conglomerates have comparable prospectively for gold.

Historically small scale gold mining of Conglomerate Materials at Beatons Creek (Artemis Resources: ARV), Just In Time and Tassie Queen (Comet Mine, near Marble Bar) have provided evidence that the similarities are valid.

Bulk samples taken during the late 1990s of Conglomerate Materials from near the Comet Mine showed the Hardey Sandstone Conglomerate Formations contained 'free' gold.

Over the current Quarter Haoma Mining will bulk sample Conglomerate Materials from the Hardey Sandstone Formations near both the Bamboo Creek Mine and Comet Mine, near Marble Bar. The nature, character, lateral extent and thickness of the auriferous conglomerates will be further assessed as a guide to future exploration.

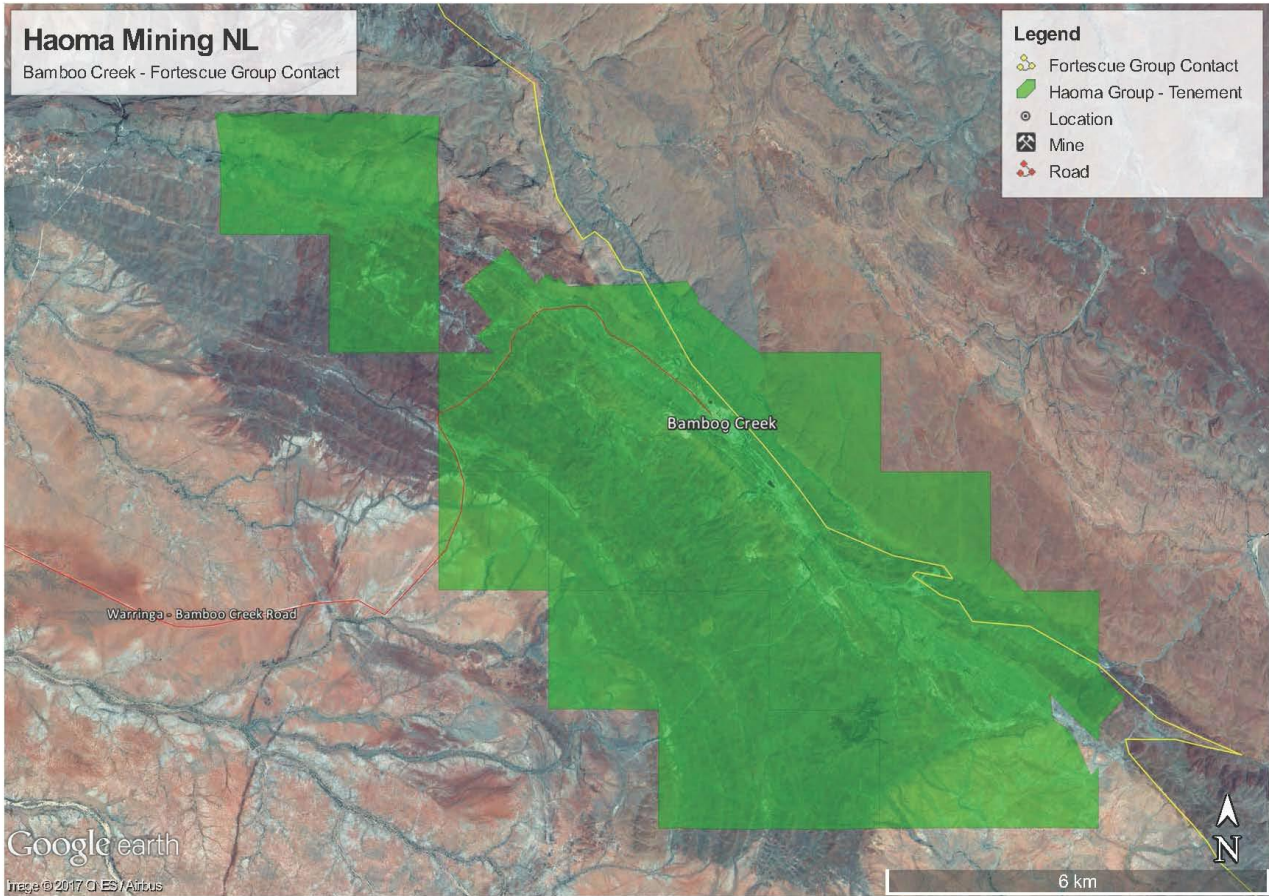


Figure 1: Haoma Mining NL tenements at Bamboo Creek that contain Conglomerate Materials in the Hardey Sandstone Formations.

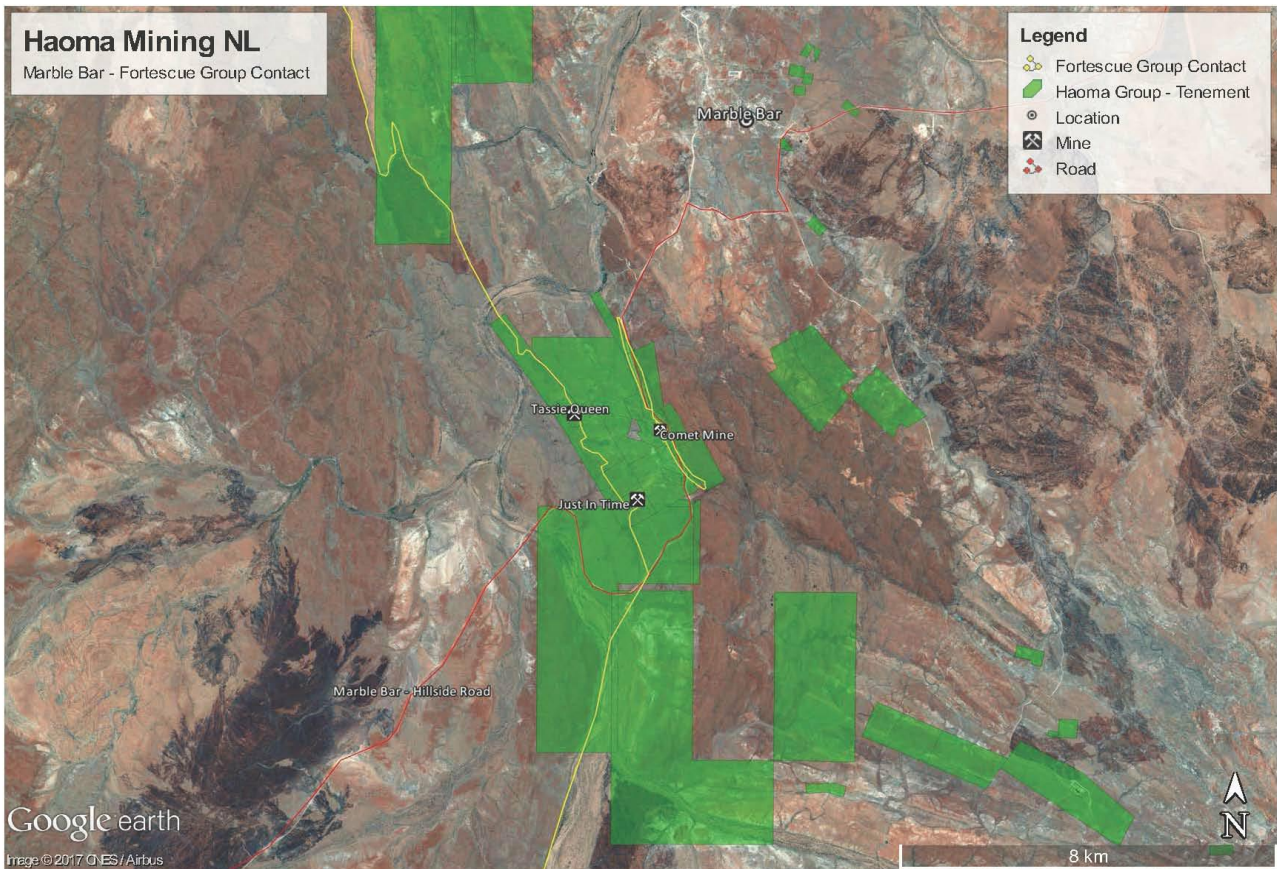


Figure 2: Haoma Mining NL tenements at Marble Bar that contain Conglomerate Materials in the Hardey Sandstone Formations.



Figure 3: Pyritic Conglomerate Material from Tassie Queen, Comet Mine, Marble Bar, WA

Yours sincerely,

A handwritten signature in black ink, reading "Gary Morgan". The signature is written in a cursive style with a long horizontal stroke at the end.

Gary C Morgan,
CHAIRMAN